

LED INCLUDED ONLY FOR DEMO PURPOSES

LED\BIDI

270R

The diagram shows a 4 MHz AC voltage source connected in series with a parallel combination of a 100 pF capacitor and a 100 ohm resistor. This parallel combination is then connected to a 100 ohm load resistor.

PIC16C84

RB4-7 CAN
GENERATE
INTERRUPT
ON CHANGE

RBO CAN BE AN
INTERRUPT INPUT

RB HAS OPTIONAL WEAK
PASSIVE PULL-UPS IN
INPUT MODE

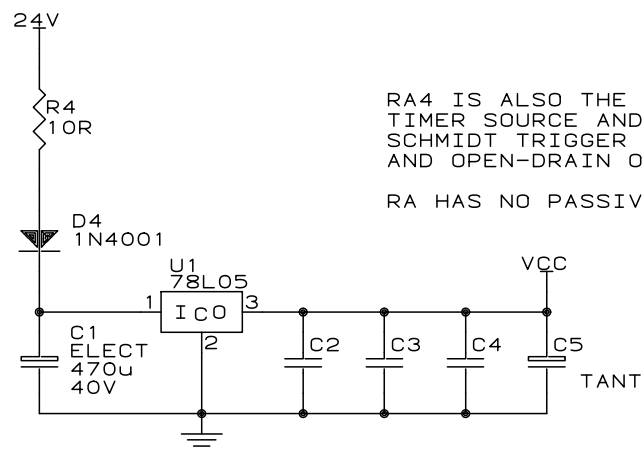
RB6 & RB7 CAN BE USED
FOR IN-SYSTEM DOWNLOADS
THEY ALSO HAVE SCHMIDT
TRIGGER INPUT BUFFERS

IN-SYSTEM PROGRAMMING AND EXPANSION SOCKET

C6 FILTERS EXTERNAL
CLOCK INPUT
FOR SOFTWARE DOWNLOADS

RA4 IS ALSO THE EXTERNAL
TIMER SOURCE AND HAS A
SCHMIDT TRIGGER INPUT BUFFER
AND OPEN-DRAIN OUTPUT BUFFER

RA HAS NO PASSIVE INPUT PULL-UPS



PIC16C84 DEMO DESIGN		
Size A	Document Number PIC84	REV A
Date:	June 19, 1996	Sheet of